



LEARNING ALPHABETS





Learning ALPHABETS

Concept by :
Nidhi Singhal



Aa



APPLE



ANT



AXE

Bb



BALL



BELL



BOY

Cc



CAT



CANDLE



CAKE

Dd



DOG



DUCK



DEER



ELEPHANT



EGG



ENVELOPE

F f

FISH



FAN



FOX

Gg



GRAPES



GUN



GOAT

Hh



HORSE



HUT



HEN



ICE-CREAM



INK



IGLOO

Jj



JOKER



JUICE



JAM

Kk



KITE



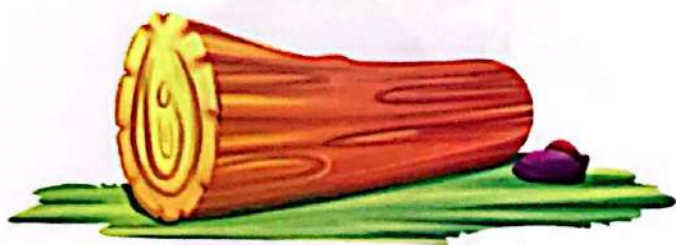
KETTLE



KEY



LION



LOG



LAMP

Mm

MONKEY



MOON



MANGO

Nn



NEST



NET



NURSE



OWL



ORANGE

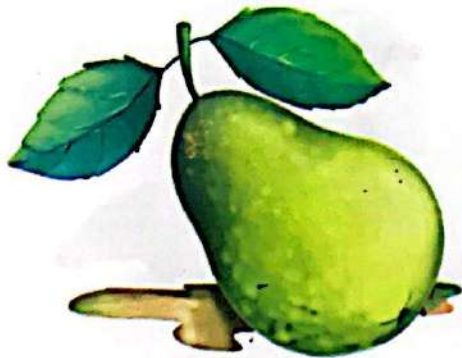


ONION

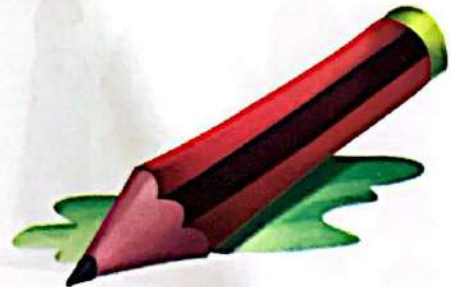
Pp



PARROT



PEAR



PENCIL

Qq

QUEEN



QUEUE



QUAIL

Rr



RABBIT



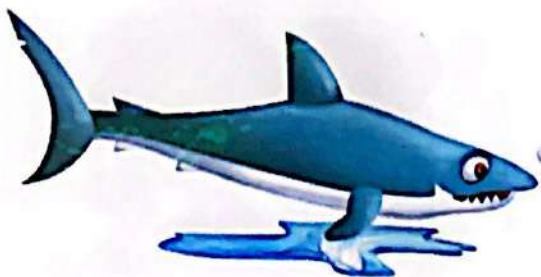
RING



RAT

Ss

SHIP



SHARK



SHOES



TIGER



TREE



TABLE

Uu



UMBRELLA



UTENSILS



UNIFORM

Vv



VAN



VULTURE



VOLCANO

Ww



WELL



WATERMELON

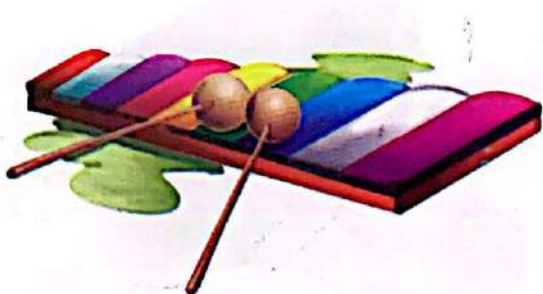


WATCH

Xx



XMAS TREE



XYLOPHONE



XRAY

Yy

YACHT



YAK

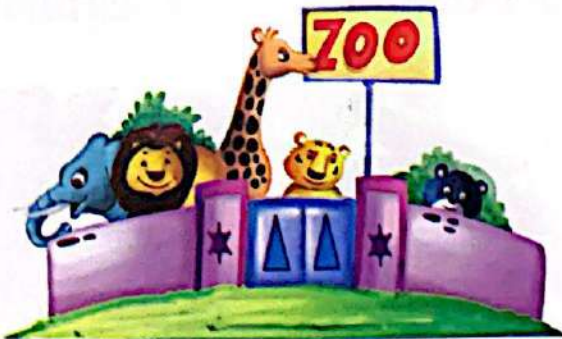


YO-YO

Zz



ZEBRA



ZOO



ZIP

FRUITS



Apple



Mango



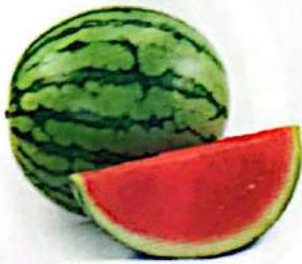
Banana



Orange



Pear



Watermelon



Papaya



Grapes

VEGETABLES



Cabbage



Cauliflower



Onion



Brinjal



Potato



Tomato



Peas



Spinach

ANIMALS



Cow



Buffalo



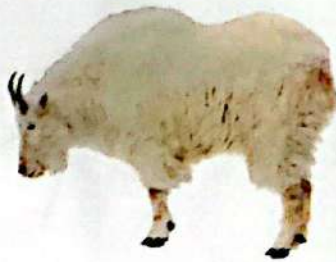
Horse



Lion



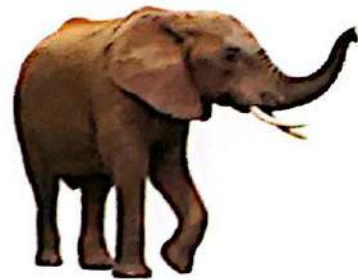
Goat



Sheep



Dog

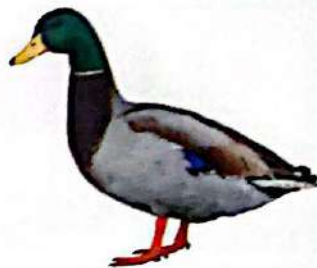


Elephant

BIRDS



Pigeon



Duck



Crow



Owl



Eagle



Swan



Hen



Peacock

MATCH THE FOLLOWING

Match the following picture with their correct letters :



R



N



X

P



Z



T



V



W



OMEX PUBLICATIONS
INDIA

Website : www.omexpublication.com
E-mail : omexpublications@gmail.com

follow us on :     

₹ 190.00

